

LogistX[®] Building System

A Better Solution. A Butler[®] Solution.

BUTLER

An Enhanced Approach to Warehouse and Distribution Construction.

Butler has a robust history of innovation that continues with the LogistX® building system. Conceived and engineered to address the unique needs of warehousing and distribution facilities, **LogistX adds value** to the traditional warehouse construction approach, which typically includes:

- Full height, load bearing, hard wall
- Diaphragm structural deck
- TPO membrane roof

LogistX is a better solution because it combines the advantages that come from using pre-engineered components while allowing the conventional components to do what they do best. This **true hybrid approach** delivers benefits that can't be achieved using one method alone.



The Secondaries are the Primary Advantage.

This is not a radical departure from the traditional approach. In fact, it will look very familiar to anyone who has built a warehouse using conventional methods. The product enhancements that LogistX brings to your warehouse and distribution facility center around the secondary systems. Our solution swaps out traditional bar joists and joist girders using **Butler truss purlins and solid web rafters** in their place. As always, there are benefits beyond the product enhancements that come from the innovation, experience and resources of Butler.



5 Ways LogistX Delivers More.



Cost Advantages

The critical functionality of a warehouse structure has to come before price considerations. But LogistX can deliver both. Our truss purlins are lighter than traditional bar joists, which means less overall product weight. Plus, the three-plate rafter design is optimal for column spacing of 50 to 60 feet. These factors can combine to deliver cost advantages.



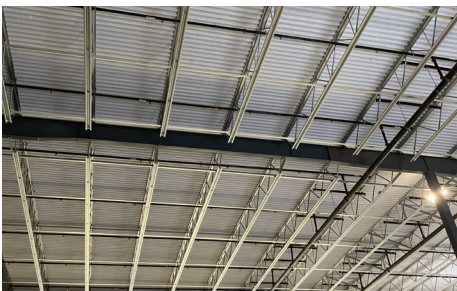
High-Quality Appearance

The G30 galvanized finish on our truss purlins is superior to traditional primer paint dip-tanks used on bar joists. It creates a noticeably clean, consistent look inside the building. You'll never see paint runs or globs.



Easier, Less Expensive Installation

Our truss purlins require fewer rows of bridging than traditional bar joists. The bridging does not require welding, reducing the cost of certified welders, and there's no need to touch up welding marks. You get the efficiency and accuracy that comes with bridging locations being pre-marked in the factory. The bridging is located correctly without a tape measure and installed in perfectly straight lines in a fraction of the time.



Convenience

When you choose Butler and the LogistX Building System, there are many resources available to you and your project. We can work with your developer, architect, or structural engineer to provide designs and pricing quickly. Each project is managed by a dedicated project manager from concept through completion.



Time to Market

LogistX comes with a promise for quick turn-around times for structural quotes. Once the order is received, our fast delivery commitment ensures your steel will be on site promptly so you can meet your time-to-market goals.

A Touch on the Technicals.

The LogistX building system uses a true hybrid approach, combining PEMB components with conventional construction components to provide unmatched flexibility.

Here are a few guidelines to help you identify and incorporate LogistX into your warehouse and distribution construction project.

- The maximum span for truss purlins is 60 feet.
- Rafters can run in either direction, with certain qualifications.
- Expansion joints are required once the length exceeds 600 feet in either direction.
- Parapets require special consideration to ensure proper roof drainage.

While we have completed many projects with this new building system, it's possible that your project will include special requirements. We continue to innovate with LogistX to meet the needs of warehousing and distribution structures. So, don't try to interpret the technical factors on your own. **Be sure to contact your local Butler Builder®** to help you evaluate the specifics of your project.





Butler Manufacturing
Kansas City, MO
816-968-3000
www.butlermfg.com

Butler® building products are constantly being improved; therefore, the information contained herein is subject to change without notice. Before finalizing project details, contact your nearest Butler Builder® or Butler Manufacturing™ for the latest information.

© 2022 BlueScope Buildings North America, Inc. All rights reserved. Butler Manufacturing™ is a division of BlueScope Buildings North America, Inc. Find your independent Butler Builder® at www.butlermfg.com.

Form No. 6603 7/22